

Innovation • Teamwork • Excellence



**IRVIN STEEL**

A division of Irvin International Inc.

# **Retropost Round/FX6 Trim Poster System Specifications**



## Irvin Steel's Retropost™ one-sheet poster installation system

Eco-friendly vinyl substrates, say hello to your new best friend, Retropost.™ Retropost™ is the latest ally in outdoor advertising's push to "go green." Our system eliminates the need for glue and paper, allowing you to post recyclable polyethylene (PE) substrates with ease.

The Retropost™ System is the most proven and reliable system available. With more than 30,000 units sold across the country, why consider anything else? Retropost™ requires only one installer to complete and is quicker and less cumbersome than other systems. No cables, no pulleys, no hassles. Plus, Retropost™ works with your existing rods and can to be used to install any manufacturer's flex. No special finishing required for your print - just standard pockets.

Primary features:

- 🌿 No cables
- 🌿 No hook ladder required for posting
- 🌿 Light-weight and easy to use
- 🌿 Requires only one installer
- 🌿 Uses standard gripper rods
- 🌿 Works with any printer's flex or vinyl
- 🌿 No special "finishing" required on substrate
- 🌿 Proven system – with over 30,000 sold in the U.S.
- 🌿 All rods and clips are hidden behind trim
- 🌿 Constructed of fiberglass and stainless steel parts
- 🌿 Eliminates unsightly poster flagging and tearing seen with traditional glue-posting
- 🌿 Fiberglass flat bar and gripper rods will never rust and are lightweight
- 🌿 Substrate adjustment pole is available to assist with installation

The Retropost™ System works with several trim kits sold in the industry. A trim kit is required. A 1 1/2" trim kit option is also available. Please contact your Irvin Steel representative for more information.





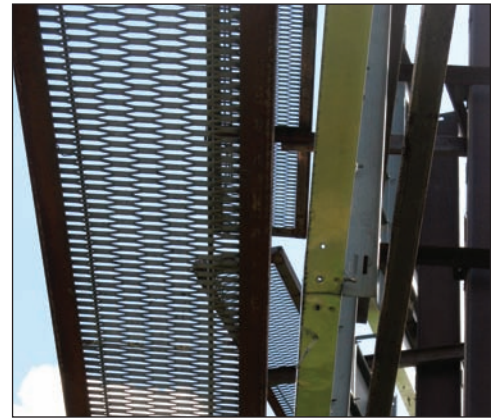
IRVIN STEEL  
A Division of Kvaerner International Inc.



Close up of side of Retro post



Close up of corner and side of Retro post



Close up of bottom of Retro post

# Outstanding **Retro Systems**

[www.isioutdoor.com](http://www.isioutdoor.com)



**IRVIN STEEL**

A division of Irvin International Inc.

Irvin Steel Inc.  
8105 Krauss Blvd  
Suite 102  
Tampa, FL 33619

Ph: 1-800-474-7846  
Local: (813) 664-8945  
Fax: (813) 621-6897  
Email: [information@irvinsteel.com](mailto:information@irvinsteel.com)